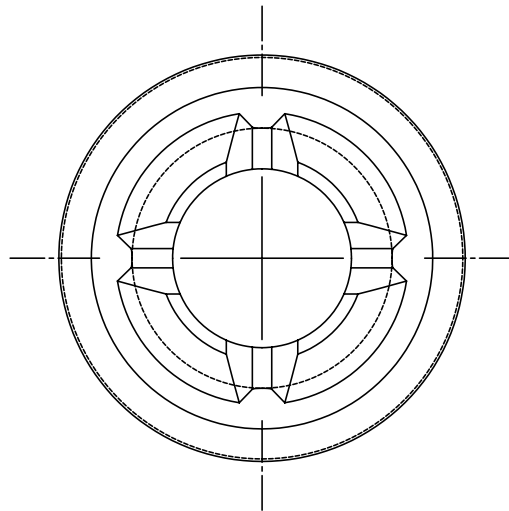
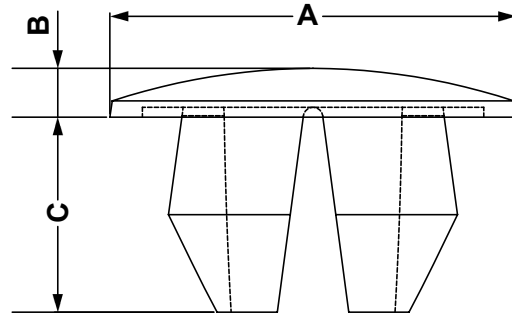



DIM.	TOL.
5mm DOWN	±0.2
5~20mm	±0.3
20~40mm	±0.4
40~60mm	±0.5
60~100mm	±0.8
100mm UP	±1.0

REVISIONS			
REV	DESCRIPTION	DATE	BY



PART NO	A	B	C	HOLE	THICKNESS	COLOUR
0226AA01	Ø 8,0	1,5	5,5	Ø 4,0	0,5 - 3,0	Black or natural
0227AA01	Ø 10,3	1,5	5,5	Ø 5,5	0,5 - 3,0	Black or natural
0228AA01	Ø 10,5	1,5	5,5	Ø 6,0	0,5 - 3,0	Black or natural
0230AA01	Ø 12,5	1,5	6,0	Ø 8,0	0,5 - 3,0	Black or natural
0231AA01	Ø 14,0	2,0	7,3	Ø 9,5	0,5 - 4,0	Black or natural
0232AA01	Ø 17,5	2,0	6,5	Ø 12,5	0,5 - 2,5	Black or natural

To order the product in natural replace "AA01" with "AA00"

				TITLE ROUND PLUG			
				MATERIAL PA 66 UL94V - 2	DATE 10/02/2017		
				HARDNESS	DRAWN R.F.		
PART NUMBER SEE TABLE		DRAWING NUMBER 17.02.10.02XX.0.E		COLOR SEE TABLE		CHECK	
SIZE A4	SCALE NTS	UNIT mm	REV A	UNLESS OTHERWISE SPECIFIED TOLERANCE SEE ABOVE		APPROVED	