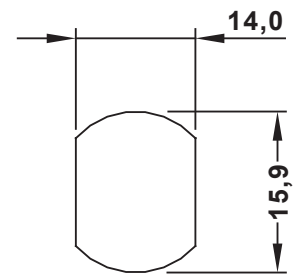
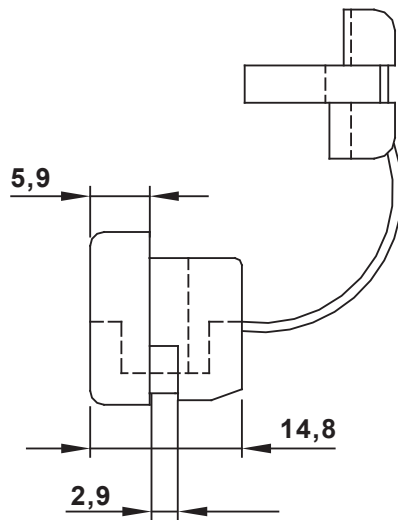
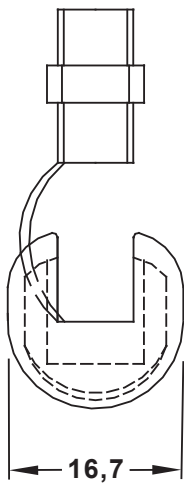


DIM.	TOL.
5mm DOWN	±0.2
5~20mm	±0.3
20~40mm	±0.4
40~60mm	±0.5
60~100mm	±0.8
100mm UP	±1.0

REVISIONS			
REV	DESCRIPTION	DATE	BY



MOUNTING HOLE



CABLE CLAMP		TITLE	
		MATERIAL	DATE
		SERVICE TEMPERATURE	DRAWN
PART NUMBER		COLOR	
DRAWING NUMBER		CHECK	
SIZE	SCALE	UNIT	REV
UNLESS OTHERWISE SPECIFIED TOLERANCE		APPROVED	

CABLE CLAMP

MATERIAL: PA 66 UL94 V2 DATE: 15/09/2015

SERVICE TEMPERATURE: -30°C + 85°C Short term: +105°C DRAWN: S.P.

PART NUMBER: 2337AA01 DRAWING NUMBER: 15.09.15.2337.0.E COLOR: NATURAL

UNLESS OTHERWISE SPECIFIED TOLERANCE: SEE ABOVE APPROVED:

UNIT: mm REV: A

SIZE: A4 SCALE: NTS