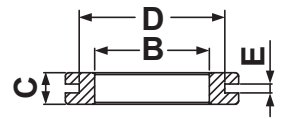
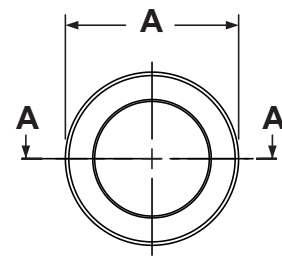


P/N	A	B	C	D	E
4625CA01	14,5	10,0	10,0	11,5	2,0
1256CA01	14,5	10,0	11,0	11,5	3,0
4626CA01	14,5	10,0	12,0	11,5	4,0
2388CA01	16,0	4,0	8,0	11,5	3,0
2389CA01	16,0	5,0	8,0	11,5	3,0
2390CA01	16,0	6,0	8,0	11,5	3,0
2391CA01	16,0	7,0	8,0	11,5	3,0
2392CA01	16,0	8,0	8,0	11,5	3,0
1261CA01	16,0	9,0	6,0	12,0	2,0
0875CA01	17,0	4,0	7,0	12,0	1,5
0876CA01	17,0	5,0	7,0	12,0	1,5
0877CA01	17,0	6,0	7,0	12,0	1,5
0878CA01	17,0	7,0	7,0	12,0	1,5
0879CA01	17,0	8,0	7,0	12,0	1,5
0880CA01	17,0	9,0	7,0	12,0	1,5
0881CA01	17,0	10,0	7,0	12,0	1,5
4496CA01	18,0	7,0	11,5	12,0	1,5
2370CA01	18,0	7,0	10,0	12,0	3,0
2371CA01	18,0	8,0	10,0	12,0	3,0
2372CA01	18,0	9,0	10,0	12,0	3,0
2373CA01	18,0	10,0	10,0	12,0	3,0
14862CA01	16,0	7,0	7,0	12,5	1,5
0822CA01	17,5	10,0	7,0	13,5	2,0
4627CA01	17,5	10,0	8,0	13,5	3,0
4628CA01	17,5	10,0	9,0	13,5	4,0
1248CA01	20,0	12,0	9,0	14,0	3,0
8099CA01	18,0	8,0	6,0	14,0	1,0
0850CA01	18,5	7,0	8,0	15,0	1,5
4629CA01	18,5	7,0	9,0	15,0	2,5
4630CA01	18,5	7,0	10,0	15,0	3,5
0851CA01	18,5	8,0	8,0	15,0	1,5
4631CA01	18,5	8,0	9,0	15,0	2,5
4632CA01	18,5	8,0	10,0	15,0	3,5
0852CA01	18,5	9,0	8,0	15,0	1,5
4633CA01	18,5	9,0	9,0	15,0	2,5
4634CA01	18,5	9,0	10,0	15,0	3,5
0853CA01	18,5	10,0	8,0	15,0	1,5
4635CA01	18,5	10,0	9,0	15,0	2,5
4636CA01	18,5	10,0	10,0	15,0	3,5
0854CA01	18,5	11,0	8,0	15,0	1,5

P/N	A	B	C	D	E
4637CA01	18,5	11,0	9,0	15,0	2,5
4638CA01	18,5	11,0	10,0	15,0	3,5
0855CA01	18,5	12,0	8,0	15,0	1,5
4639CA01	18,5	12,0	9,0	15,0	2,5
4640CA01	18,5	12,0	10,0	15,0	3,5
0856CA01	18,5	13,0	8,0	15,0	1,5
4641CA01	18,5	13,0	9,0	15,0	2,5
4642CA01	18,5	13,0	10,0	15,0	3,5
2407CA01	19,0	12,0	8,0	15,0	1,5
4643CA01	19,0	12,0	9,0	15,0	2,5
4644CA01	19,0	12,0	10,0	15,0	3,5
0830CA01	20,5	7,0	7,0	15,0	2,0
0832CA01	20,5	8,0	7,0	15,0	2,0
0834CA01	20,5	9,0	7,0	15,0	2,0
0836CA01	20,5	10,0	7,0	15,0	2,0
0838CA01	20,5	11,0	7,0	15,0	2,0
0840CA01	20,5	12,0	7,0	15,0	2,0
0842CA01	20,5	13,0	7,0	15,0	2,0
2409CA01	23,0	10,0	8,0	18,0	2,0
2410CA01	23,0	11,0	8,0	18,0	2,0
2411CA01	23,0	12,0	8,0	18,0	2,0
2412CA01	23,0	13,0	8,0	18,0	2,0
2413CA01	23,0	14,0	8,0	18,0	2,0
2414CA01	23,0	15,0	8,0	18,0	2,0
2415CA01	23,0	16,0	8,0	18,0	2,0
0868CA01	24,0	10,0	7,5	18,0	2,0
4645CA01	24,0	10,0	8,5	18,0	3,0
4646CA01	24,0	10,0	9,5	18,0	4,0
0869CA01	24,0	11,0	7,5	18,0	2,0
4647CA01	24,0	11,0	8,5	18,0	3,0
4648CA01	24,0	11,0	9,5	18,0	4,0
0870CA01	24,0	12,0	7,5	18,0	2,0
4649CA01	24,0	12,0	8,5	18,0	3,0
4650CA01	24,0	12,0	9,5	18,0	4,0
0871CA01	24,0	13,0	7,5	18,0	2,0
4651CA01	24,0	13,0	8,5	18,0	3,0
4652CA01	24,0	13,0	9,5	18,0	4,0
0872CA01	24,0	14,0	7,5	18,0	2,0
4653CA01	24,0	14,0	8,5	18,0	3,0
4654CA01	24,0	14,0	9,5	18,0	4,0

P/N	A	B	C	D	E
0873CA01	24,0	15,0	7,5	18,0	2,0
4655CA01	24,0	15,0	8,5	18,0	3,0
4656CA01	24,0	15,0	9,5	18,0	4,0
1201CA01	24,0	16,0	7,5	18,0	2,0
4657CA01	24,0	16,0	8,5	18,0	3,0
4658CA01	24,0	16,0	9,5	18,0	4,0
0865CA01	28,0	16,0	8,0	21,0	2,0
4667CA01	28,0	16,0	9,0	21,0	3,0
4668CA01	28,0	16,0	10,0	21,0	4,0
4677CA01	28,0	19,0	8,0	23,0	2,0
4678CA01	28,0	19,0	9,0	23,0	3,0
4679CA01	28,0	19,0	10,0	23,0	4,0
4669CA01	32,0	15,5	8,5	24,0	2,0
4670CA01	32,0	15,5	9,5	24,0	3,0
4671CA01	32,0	15,5	10,5	24,0	4,0
4672CA01	32,0	17,5	8,5	24,0	2,0
4673CA01	32,0	17,5	9,5	24,0	3,0
4674CA01	32,0	17,5	10,5	24,0	4,0
1258CA01	32,0	19,5	8,5	24,0	2,0
4675CA01	32,0	19,5	9,5	24,0	3,0
4676CA01	32,0	19,5	10,5	24,0	4,0
4659CA01	35,0	18,0	8,5	26,0	2,0
4660CA01	35,0	18,0	9,5	26,0	3,0
4661CA01	35,0	18,0	10,5	26,0	4,0
4662CA01	35,0	20,0	8,5	26,0	2,0
4663CA01	35,0	20,0	9,5	26,0	3,0
4664CA01	35,0	20,0	10,5	26,0	4,0
1257CA01	35,0	22,0	8,5	26,0	2,0
4665CA01	35,0	22,0	9,5	26,0	3,0
4666CA01	35,0	22,0	10,5	26,0	4,0
5742CA01	35,0	21,0	8,5	28,0	2,0
4498CA01	39,0	28,0	7,0	34,0	2,0
4499CA01	39,0	28,0	8,0	34,0	3,0
4500CA01	39,0	28,0	9,0	34,0	4,0
1259CA01	45,0	35,0	7,0	39,0	2,0
4680CA01	45,0	35,0	8,0	39,0	3,0
4681CA01	45,0	35,0	9,0	39,0	4,0



SECTION A - A

REV.	DESCRIPTION	DATE
	MATERIAL: PVC HB(UL94) AVAILABLE IN TPE HB (UL94) BY SPECIAL REQUEST	
	COLOUR: BLACK	
	WORKING TEMPERATURE: - PVC: -25°C ~ +60°C - TPE: -28°C ~ +90°C	

TITLE: SOFT PVC GROMMETS		DWG UNIT: MM	
Modelled in RHINO 4.0		FILE:	DwN: 11/05/21
TOLLERANCES UNLESS NOTED		SHEET: 1 OF 1	ChkD: DT:21.05.11.XXXXX.0.E
SEE ABOVE		SCALE: NTS	Part Number: SEE TABLE

