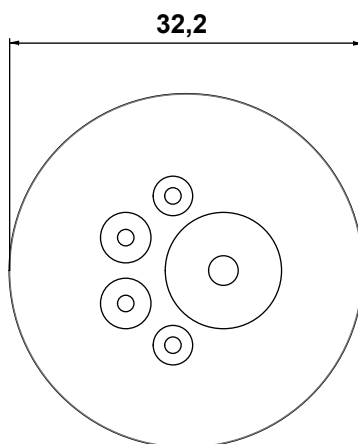
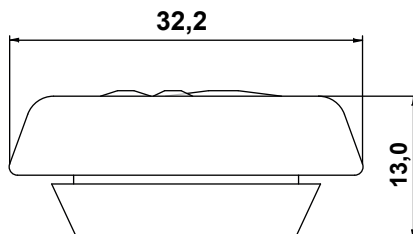


DIM.	TOL.
5mm DOWN	±0.2
5~20mm	±0.3
20~40mm	±0.4
40~60mm	±0.5
60~100mm	±0.8
100mm UP	±1.0

REVISIONS			
REV	DESCRIPTION	DATE	BY



**WORKING TEMPERATURE: -40°C ~ +100°C**

**SIZE: M20**

**CUT-OUT: Ø20,5**

**IP RATING: IP65**

**FLAMMABILITY: V0 (UL94)**

**PLATE THICKNESS: 1,0 - 4,0mm**

**INSTALLATION RANGE (Ø):**

- 1 x 1 - 10,0 mm
- 2 x 1 - 4,6 mm
- 2 x 1 - 3,6 mm



<b>TITLE</b> <b>ROUND CABLE ENTRY PLATE IP65</b>		<b>MATERIAL</b> TPE V0 (UL94)	<b>DATE</b> 26/06/2024
		<b>COLOR</b> RAL 7035	<b>DRAWN</b> E.B.
<b>PART NUMBER</b> 18719PS117035	<b>DRAWING NUMBER</b> 24.06.26.18719.0.E	<b>UNLESS OTHERWISE SPECIFIED TOLERANCE</b> SEE ABOVE	<b>CHECK</b>  <b>APPROVED</b>
<b>SIZE</b> A4	<b>SCALE</b> NTS	<b>UNIT</b> mm.	<b>REV</b> A