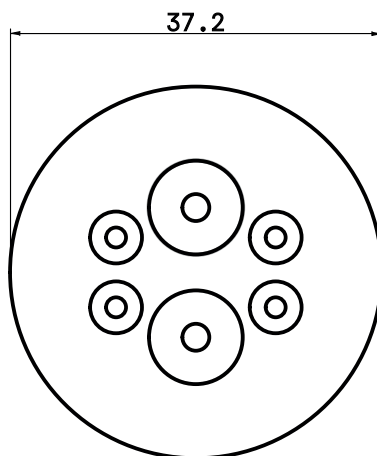
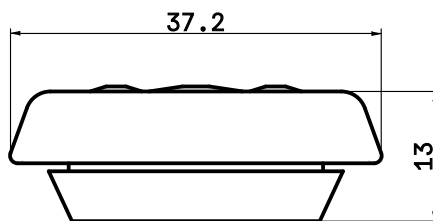


DIM.	TOL.
5mm DOWN	±0.2
5~20mm	±0.3
20~40mm	±0.4
40~60mm	±0.5
60~100mm	±0.8
100mm UP	±1.0

REVISIONS			
REV	DESCRIPTION	DATE	BY



WORKING TEMPERATURE: -40°C ~ +100°C
SIZE: M25
CUT-OUT: Ø25,5
IP RATING: IP65
FLAMMABILITY: V0 (UL94)
PLATE THICKNESS: 1,0 - 4,0mm
INSTALLATION RANGE (Ø):
 - 2 x 1 - 9,4 mm
 - 4 x 1 - 5,2 mm

				TITLE ROUND CABLE ENTRY PLATE IP65	
				MATERIAL TPE V0 (UL94)	DATE 26/06/2024
PART NUMBER 18722PS117035				DRAWING NUMBER 24.06.26.18722.0.E	
				COLOR RAL 7035	DRAWN E.B.
SIZE A4	SCALE NTS	UNIT mm.	REV A	CHECK UNLESS OTHERWISE SPECIFIED TOLERANCE SEE ABOVE	APPROVED