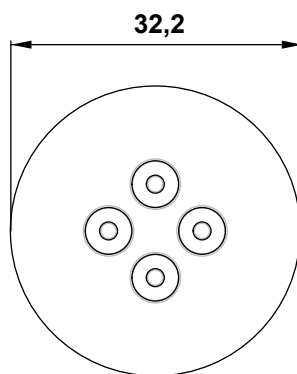
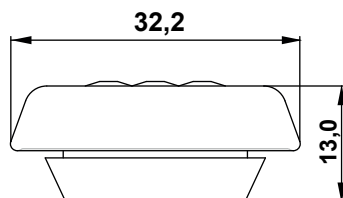


DIM.	TOL.
5mm DOWN	±0.2
5~20mm	±0.3
20~40mm	±0.4
40~60mm	±0.5
60~100mm	±0.8
100mm UP	±1.0

REVISIONS			
REV	DESCRIPTION	DATE	BY



WORKING TEMPERATURE: -40°C ~+100°C
SIZE: M20
CUT-OUT: Ø20,5
IP RATING: IP65
FLAMMABILITY: V0 (UL94)
PLATE THICKNESS: 1,0 - 4,0mm
INSTALLATION RANGE (Ø): 4 x 1 - 5,2 mm

				TITLE ROUND CABLE ENTRY PLATE IP65	
				MATERIAL TPE V0 (UL94)	DATE 26/06/2024
PART NUMBER 18717PS117035				DRAWING NUMBER 24.06.26.18717.0.E	
				COLOR RAL 7035	CHECK
SIZE A4	SCALE NTS	UNIT mm.	REV A	UNLESS OTHERWISE SPECIFIED TOLERANCE SEE ABOVE	APPROVED