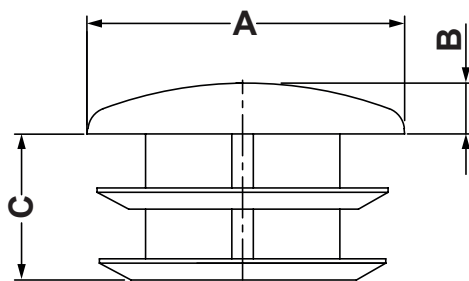



DIM.	TOL.
5mm DOWN	±0.2
5~20mm	±0.3
20~40mm	±0.4
40~60mm	±0.5
60~100mm	±0.8
100mm UP	±1.0

REVISIONS			
REV	DESCRIPTION	DATE	BY



P/N	A	B	C	Ø HOLE
3410EA01	10,0	2,0	10,5	7,0
3411EA01	12,0	2,0	10,8	9,0
3412EA01	14,0	2,0	12,3	11,0
3413EA01	15,0	3,0	12,8	14,0
3414EA01	16,0	3,0	12,5	13,0
3415EA01	18,0	3,0	13,0	15,0
3416EA01	20,0	4,0	13,9	17,0
3417EA01	22,0	4,0	13,9	19,0
3418EA01	25,0	4,0	17,8	22,0
3419EA01	28,0	5,0	15,0	25,0
3420EA01	30,0	5,0	16,0	27,0
3421EA01	32,0	5,0	16,0	29,0
3422EA01	35,0	5,0	17,0	32,0
3423EA01	40,0	5,0	17,0	37,0
3424EA01	45,0	5,0	17,0	42,0
3425EA01	50,0	5,0	17,0	47,0

		TITLE ROUND LAMELLAR PLUG	
		MATERIAL LD-PE	DATE 12/05/2021
PART NUMBER SEE TABLE		DRAWING NUMBER 21.05.12.34XX.0.E	
WORKING TEMPERATURE: -30°C ~ +70°C		DRAWN R.F.	
SIZE A4	SCALE NTS	COLOR BLACK	CHECK
UNIT mm.	REV A	UNLESS OTHERWISE SPECIFIED TOLERANCE SEE ABOVE	APPROVED