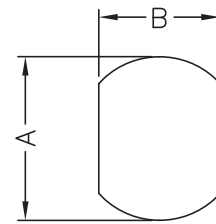
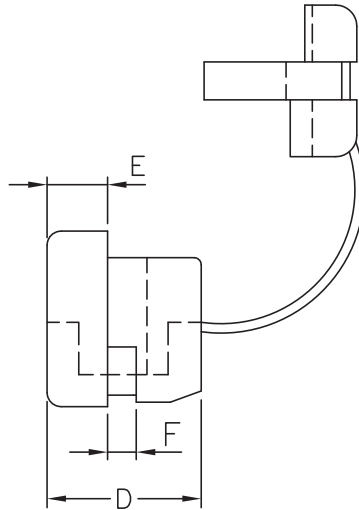
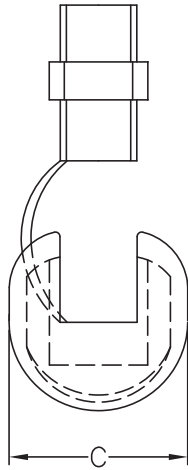




DIM.	TOL
5mm DOWN	±0.2
5~20mm	±0.3
20~40mm	±0.4
40~60mm	±0.5
60~100mm	±0.8
100mm UP	±1.0

REVISIONS			
REV	DESCRIPTION	DATE	BY



MOUNTING HOLE

PART NO.	Cord Type	Size(AWG)of Conductor	CHASSIS DIMENSION		CHASSIS THICKNESS MAX F	DIMENSION			CROSS SECTION SHAPE
			A	B		C	D	E	
10866AA01	SPT-1	18/2C	9.5	8.7	1.6	10.4	10.4	4.0	FLAT TYPE 
10867AA01	SPT-1	18/2C	11.0	9.9	1.6	11.5	10.4	4.0	
10868AA01	SPT-1	18/2C	11.0	9.9	2.5	11.5	10.4	4.0	
10869AA01	SPT-2	18/2C	12.7	11.8	1.6	13.3	10.4	4.0	
		16/2C	13.1						
10863AA01	SPT-3	18/2C	14.3	13.4	1.6	15.5	15.4	6.2	
10864AA01	SPT-3	18/2C	14.3	13.4	3.2	15.5	15.4	6.2	

				TITLE CABLE CLAMP			
				MATERIAL PA66 V2 UL94		DATE 17/05/2011	
PART NUMBER SEE TABLE				DRAWING NUMBER 11.05.17.XXXXX.0.E		DRAWN J.D.	
SIZE A4				SCALE NTS		CHECK	
UNIT mm.				REV A		APPROVED	
COLOR BLACK				UNLESS OTHERWISE SPECIFIED TOLERANCE SEE ABOVE		APPROVED	