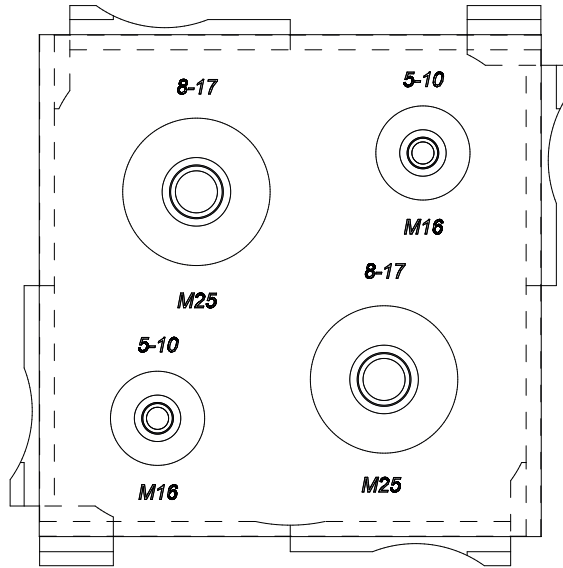


REVISIONS			
REV	DESCRIPTION	DATE	BY



No. HOLES: 2 (M25)

Ø CABLE: 8,0 - 17,0

No. HOLES: 2 (M16)

Ø CABLE: 5,0 - 10,0

INSERT SIZE: 68 x 68

PROTECTION GRADE: IP65

WORKING TEMPERATURE: -20°C ~ +125°C

TEST STANDARD: EN60529: 1991+A1, EN60670-1:2005

COMPATIBLE WITH FL21 FRAME (9050FA117035 / 9050FA019005)

P/N	COLOUR
9060FA019005	BLACK RAL 9005
9060FA117035	GREY RAL 7035



TITLE
MODULAR GLAND PLATES IP65 – INSERTS

MATERIAL
Fiberglass/Polypropylene/TPE

DATE
05/06/2025

DRAWN
E.B.

COLOR
SEE TABLE

CHECK

UNLESS OTHERWISE SPECIFIED
TOLERANCE SEE ABOVE

APPROVED

PART NUMBER
SEE TABLE

DRAWING NUMBER
25.06.05.9060.E

SIZE
A4

SCALE
NTS

UNIT
mm.

REV
A