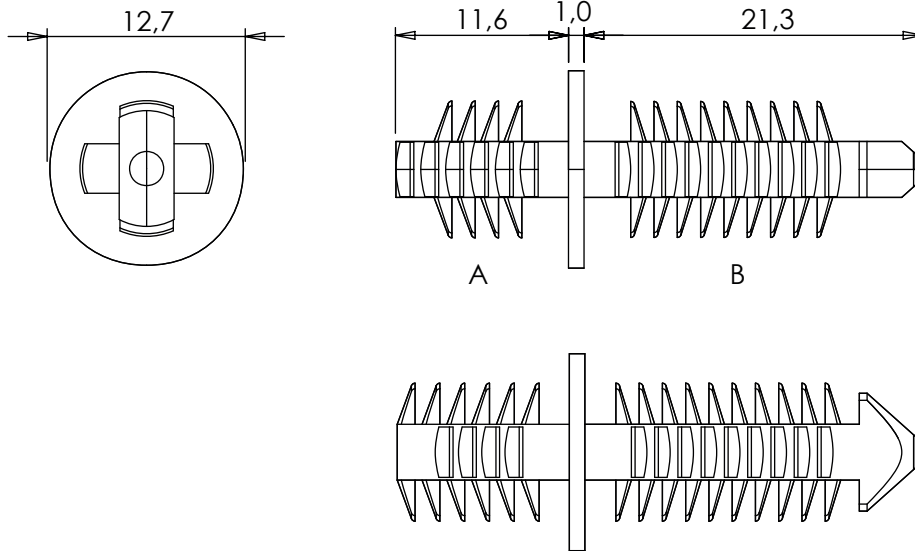


DIM.	TOL.
5mm DOWN	±0.2
5~20mm	±0.3
20~40mm	±0.4
40~60mm	±0.5
60~100mm	±0.8
100mm UP	±1.0

REVISIONS			
REV	DESCRIPTION	DATE	BY



P/N	COLOUR
19571AA01	BLACK
19571AA00	NATURAL

MOUNTING HOLE: Ø8,0
PANEL THICKNESS A: 3,2 - 9,5
PANEL THICKNESS B: 3,6 - 19,0

				TITLE PINE TREE CLIP, DOUBLE ENDED	
				MATERIAL PA 66 V2(UL94)	DATE 17/04/2025
PART NUMBER SEE TABLE				DRAWN E.B.	
				DRAWING NUMBER 25.04.17.19571.E	
PART NUMBER SEE TABLE				COLOR SEE TABLE	
SIZE A4	SCALE NTS	UNIT mm.	REV A	UNLESS OTHERWISE SPECIFIED TOLERANCE SEE ABOVE	
				CHECK APPROVED	