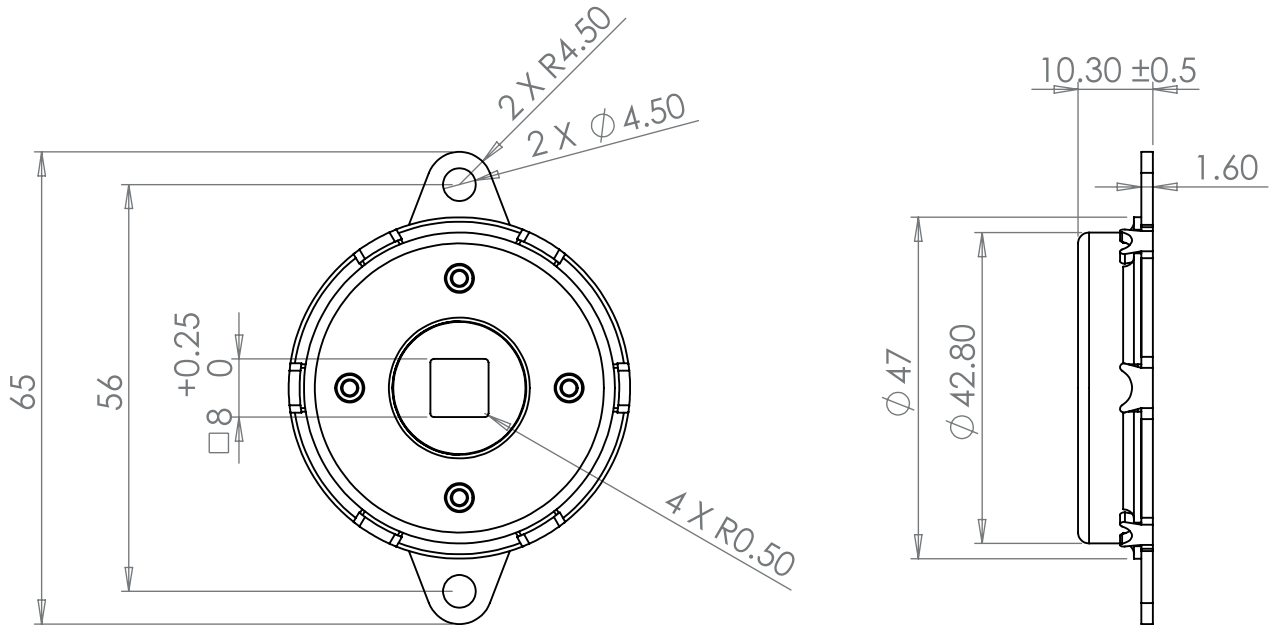
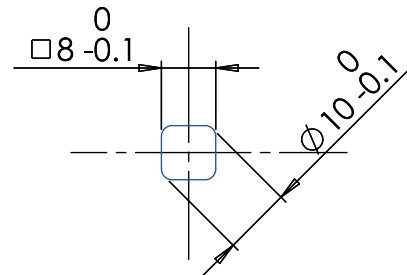


DIM.	TOL.
5mm DOWN	±0.2
5~20mm	±0.3
20~40mm	±0.4
40~60mm	±0.5
60~100mm	±0.8
100mm UP	±1.0

REVISIONS			
REV	DESCRIPTION	DATE	BY



**RECOMMENDED SHAFT DIMENSIONS**



**RATED TORQUE:** 1.0 ± 0.2Nm (10 ± 2kgf.cm)  
**DAMPING DIRECTION:** BOTH DIRECTIONS  
**MAX. ROTATION SPEED:** 50 RPM  
**MAX. CYCLE RATE:** 12 CYCLE/MIN  
**WORKING TEMPERATURE:** -10 ~ +50°C

				<b>TITLE</b> <b>HI TORQUE ROTARY DAMPER-BOTH DIRECTIONS</b>	
				<b>MATERIAL</b> STEEL / GLASS FILLED NYLON / SILICONE	<b>DATE</b> 23/04/2025
<b>PART NUMBER</b> 19662XX94		<b>DRAWING NUMBER</b> 25.04.23.19662.0.E		<b>COLOR</b>	<b>DRAWN</b> E.B.
<b>SIZE</b> A4	<b>SCALE</b> NTS	<b>UNIT</b> mm.	<b>REV</b> A	<b>UNLESS OTHERWISE SPECIFIED TOLERANCE</b> SEE ABOVE	<b>CHECK</b>
				<b>APPROVED</b>	