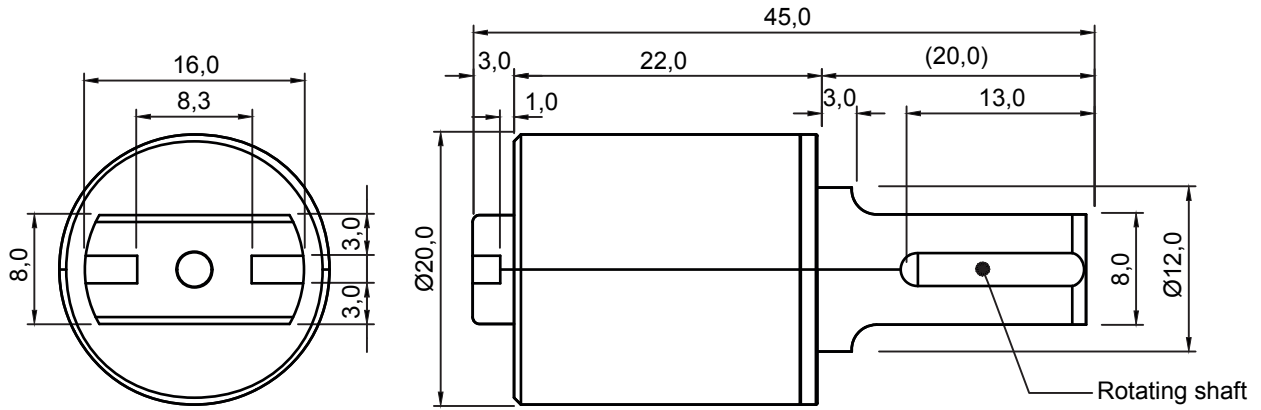



DIM.	TOL.
5mm DOWN	±0.2
5~20mm	±0.3
20~40mm	±0.4
40~60mm	±0.5
60~100mm	±0.8
100mm UP	±1.0

REVISIONS			
REV	DESCRIPTION	DATE	BY



P/N	ROTATION	TORQUE	RETURN TORQUE	COLOUR
19656XX01	RIGHT DIRECTION	1 N-m (10kgf-cm)	0.2N-m (2kgf-cm)	BLACK
19657XX01	LEFT DIRECTION	1 N-m (10kgf-cm)	0.2N-m (2kgf-cm)	BLACK WITH GREY COLLAR
19658XX01	RIGHT DIRECTION	2 N-m (20kgf-cm)	0.4N-m (4kgf-cm)	BLACK
19659XX01	LEFT DIRECTION	2 N-m (20kgf-cm)	0.4N-m (4kgf-cm)	BLACK WITH GREY COLLAR
19660XX01	RIGHT DIRECTION	3 N-m (30kgf-cm)	0.8N-m (8kgf-cm)	BLACK
19661XX01	LEFT DIRECTION	3 N-m (30kgf-cm)	0.8N-m (8kgf-cm)	BLACK WITH GREY COLLAR

MAX. ANGLE 110°
WORKING TEMPERATURE: -5°C ~ +50°C
OIL TYPE: SILICONE OIL
MATERIAL:
BODY AND CAP: PBT
ROTATING SHAFT: PPS

				TITLE BARREL DAMPER	
				MATERIAL SEE ABOVE	DATE 23/04/2025
PART NUMBER SEE TABLE				DRAWN E.B.	
				DRAWING NUMBER 25.04.23.196X.0.E	
SIZE A4				COLOR SEE TABLE	
				CHECK	
SCALE NTS				UNLESS OTHERWISE SPECIFIED TOLERANCE SEE ABOVE	
				APPROVED	
UNIT mm.				REV A	